

GRID INSIGHTS FROM EXACTER'S GRIDTRAK™ PORTAL WILL DRIVE NEW STRATEGIES FOR ADDRESSING POINTS OF RISK

“Exacter’s GRIDTRAK portal is a capital purchase enabling cost-efficient, targeted hardening of true conditions-based outage risks on your system.”

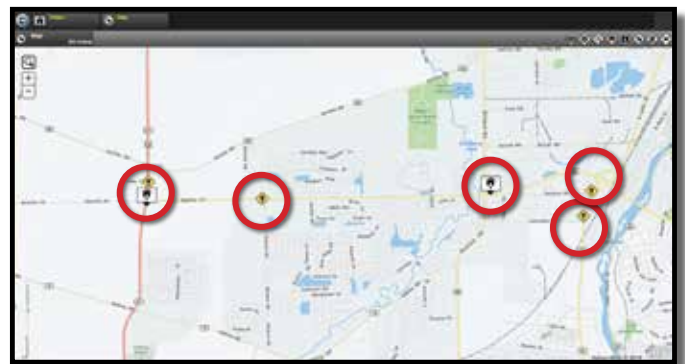
— Geoffrey Bibo, President
Exacter, Inc.



The GRIDTRAK™ portal allows you to view results of your Exacter grid health assessment data in ways that provide new approaches for reducing outages and improving reliability. Flexible data queries allow you to view data by circuit number, geographically, by type of equipment, or in a variety of other ways. The result is new insights for identifying and prioritizing the places on your grid that represent biggest opportunities for reliability gains based on actual conditions-based data.

APPLICATIONS

- 1. Query & Display the health of the most critical customer locations on your system**
- 2. Query & Display data by Transformer, Cutout, Lightning Arrester, or other component type**
- 3. View Geographic Maps for Developing Optimized Repair Schedules + work orders**
- 4. Prioritize the Most “At Risk” Circuits**



Map queries allow you to identify findings geographically to optimize preventive maintenance operations.

Exacter

Data & Analytics for Driving New Reliability Strategies
www.exacterinc.com

GRIDTRAK DATA ANALYTICS PROVIDE **SYSTEM HEALTH VISIBILITY** & ALLOW **CAPITALIZATION OF PREDICTIVE** **GRID IMPROVEMENTS**

Observation Date	Circuit Number	Pole Number	Address	City	Finding 1	Finding 2
2018-05	1807	39876	232 Main	Pleasant	Pin Insulator	
2018-05	1790	29888	2344 Park	Franklin	Pin Insulator	
2018-05	1545	21766	3105 Village Dr	Springfield	Lght Arrester	
2018-05	1545	21791	222 4 th St.	Springfield	Cutout	
2018-05	1618	2844	111 Myrtle	Greenville	Pin Insulator	
2018-05	1826	39622	15 Central Ave	Pleasant	Lght Arrester	
2018-05	1523	27866	1809 Elm	Franklin	Lght Arrester	
2018-05	1829	40111	64 Seneca	Pine Bluff	Transformer	
2018-05	1531	23091	1585 Route 29	Springfield	Cutout	Pin Insulator
2018-05	1794	26345	122 Rosewood	Franklin	Lght Arrester	
2018-05	1837	4103	4577 Pine Bluff	Pine Bluff	Cutout	
2018-05	1796	26349	298 Geneva	Franklin	Pin Insulator	
2018-05	1539	20655	2811 Norwood	Springfield	Pin Insulator	
2018-05	1841	40008	1442 Maple	Pine Bluff	Pin Insulator	
2018-05	1622	2933	1676 Sherman	Greenville	Pin Insulator	
2018-05	1541	20971	1655 Route 29	Springfield	Cutout	
2018-05	1796	28770	111 Washburn	Franklin	Pin Insulator	
2018-05	1790	28049	2655 Case Rd	Franklin	Dead End Bell	Pin Insulator
2018-05	1607	2740	2277 Dixie Hwy	Greenville	Pin Insulator	
2018-05	1607	2713	2121 Dixie Hwy	Greenville	Pin Insulator	

**OPTIMIZE MAINTENANCE
 BY SORTING
 FINDINGS BY GEOGRAPHIC
 LOCATION**

**PRIORITIZE REPAIRS
 BY IDENTIFYING
 TYPE OF EQUIPMENT
 IN PRE-FAIL STATE**

Better Access to Grid Assessment Data

The Exacter GRIDTRAK Portal allows you a more effective means to harvest grid data from your health assessments.

The portal allows you to view street maps, photographs, specific poles or circuits, and GPS maps.

It also allows you to add key assets into your map views like substations, industrial parks, downtown areas, or other critical points of concern on your system.

Note: Purchasing Exacter's GRIDTRAK Portal enables the majority of your grid assessment investment to be capitalized – meaning your Exacter assessment moves from an operational expense to primarily a capital budget item.

